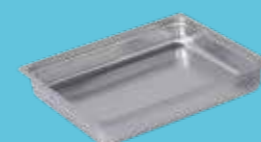


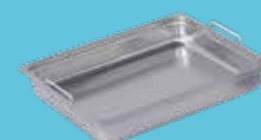
DISTRIBUCIÓN Y EXPOSICIÓN DE ALIMENTOS

# Recipientes Gastronorm



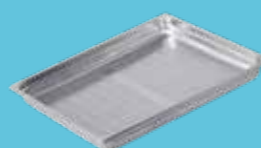
## CUBETAS GN LISAS

pág. 208



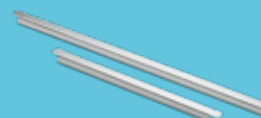
## CUBETAS GN CON ASAS

pág. 209



## CUBETAS GN PERFORADAS

pág. 210



## ESPECIALES

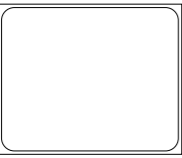





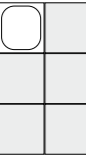
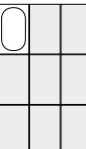
pág. 211

RECIPIENTES GASTRONORM

# Cubetas Gastronorm lisas



· Fabricadas en acero inoxidable AISI 304 18/10 de gran robustez y bordes reforzados.

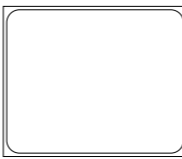




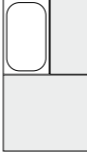
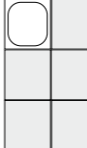
Modelo	Medidas	Profundidad (mm)	Capacidad (litros)	Código	PVP (€)	
<b>2/1</b>		650 x 530	200	52,00	• RGN21200	<b>105</b>
			150	43,10	• RGN21150	<b>83</b>
			100	28,90	• RGN21100	<b>67</b>
			65	18,80	• RGN21060	<b>54</b>
			40	11,50	• RGN21040	<b>48</b>
<b>1/1</b>		325x530	200	26,00	• RGN11200	<b>54</b>
			150	20,20	• RGN11150	<b>45</b>
			100	14,20	• RGN11100	<b>34</b>
			65	8,30	• RGN11060	<b>26</b>
			40	5,10	• RGN11040	<b>23</b>
<b>2/3</b>		325x352	200	18,30	• RGN23200	<b>62</b>
			150	13,20	• RGN23150	<b>47</b>
			100	8,80	• RGN23100	<b>33</b>
			65	5,60	• RGN23065	<b>27</b>
			40	3,10	• RGN23040	<b>24</b>
<b>1/2</b>		325x265	200	12,00	• RGN12200	<b>39</b>
			150	9,10	• RGN12150	<b>29</b>
			100	6,10	• RGN12100	<b>24</b>
			65	4,10	• RGN12065	<b>18</b>
			40	2,20	• RGN12040	<b>16</b>
<b>1/3</b>		325x176	200	7,30	• RGN13200	<b>34</b>
			150	5,60	• RGN13150	<b>30</b>
			100	3,80	• RGN13100	<b>19</b>
			65	2,50	• RGN13065	<b>15</b>
			40	1,50	• RGN13040	<b>14</b>
<b>1/4</b>		265x162	200	5,00	• RGN14200	<b>32</b>
			150	4,10	• RGN14150	<b>24</b>
			100	2,80	• RGN14100	<b>17</b>
			65	1,70	• RGN14065	<b>13</b>
			20	0,50	• RGN14020	<b>10</b>
<b>1/6</b>		176x162	200	2,90	• RGN16200	<b>29</b>
			150	2,20	• RGN16150	<b>23</b>
			100	1,60	• RGN16100	<b>15</b>
			65	1,00	• RGN16065	<b>13</b>
<b>1/9</b>		170x108	100	0,80	• RGN19100	<b>14</b>
			65	0,60	• RGN19065	<b>9</b>

RECIPIENTES GASTRONORM

# Cubetas Gastronorm con asas verticales móviles



· Fabricadas en acero inoxidable AISI 304 18/10 de gran robustez y bordes reforzados.  
· Las asas retráctiles facilitan la manipulación y el apilado de los recipientes.

Modelo	Medidas	Profundidad (mm)	Capacidad (litros)	Código	PVP (€)	
<b>2/1</b>		650 x 530	200	52,00	• RGN2120A	<b>112</b>
			150	43,10	• RGN2115A	<b>90</b>
			100	28,90	• RGN2110A	<b>74</b>
			65	18,80	• RGN2106A	<b>62</b>
			40	11,50	• RGN2104A	<b>55</b>
<b>1/1</b>		325x530	200	26,00	• RGN1120A	<b>61</b>
			150	20,20	• RGN1115A	<b>52</b>
			100	14,20	• RGN1110A	<b>41</b>
			65	8,30	• RGN1106A	<b>33</b>
			40	5,10	• RGN1104A	<b>30</b>
<b>2/3</b>		325x352	200	18,30	• RGN2320A	<b>69</b>
			150	13,20	• RGN2315A	<b>54</b>
			100	8,80	• RGN2310A	<b>40</b>
			65	5,60	• RGN2306A	<b>34</b>
			40	3,10	• RGN2304A	<b>31</b>
<b>1/2</b>		325x265	200	12,00	• RGN1220A	<b>46</b>
			150	9,10	• RGN1215A	<b>37</b>
			100	6,10	• RGN1210A	<b>31</b>
			65	4,10	• RGN1206A	<b>25</b>
			40	2,20	• RGN1204A	<b>23</b>
<b>1/3</b>		325x176	200	7,30	• RGN1320A	<b>41</b>
			150	5,60	• RGN1315A	<b>37</b>
			100	3,80	• RGN1310A	<b>26</b>
			65	2,50	• RGN1306A	<b>22</b>
			40	1,50	• RGN1304A	<b>21</b>
<b>1/4</b>		265x162	200	5,00	• RGN1420A	<b>39</b>
			150	4,10	• RGN1415A	<b>31</b>
			100	2,80	• RGN1410A	<b>24</b>
			65	1,70	• RGN1406A	<b>20</b>
			20	0,50	• RGN14020	<b>10</b>
<b>1/6</b>		176x162	200	2,90	• RGN1620A	<b>36</b>
			150	2,20	• RGN1615A	<b>30</b>
			100	1,60	• RGN1610A	<b>23</b>
			65	1,00	• RGN1606A	<b>20</b>

RECIPIENTES GASTRONORM

# Cubetas Gastronorm perforadas

- Fabricadas en acero inoxidable AISI 304 18/10 de gran robustez y bordes reforzados.
- Las cubetas Gastronorm perforadas facilitan el escurrido de los alimentos.



Modelo	Medidas	Profundidad (mm)	Capacidad (litros)	Código	PVP (€)
2/1	650 x 530	200	52,00	• RGN2120F	<b>160</b>
		150	43,10	• RGN2115F	<b>131</b>
		100	28,90	• RGN2110F	<b>93</b>
		65	18,80	• RGN2106F	<b>75</b>
		40	11,50	• RGN2104F	<b>59</b>
		20	6,20	• RGN2102F	<b>56</b>
1/1	325x530	200	26,00	• RGN1120F	<b>97</b>
		150	20,20	• RGN1115F	<b>85</b>
		100	14,20	• RGN1110F	<b>56</b>
		65	8,30	• RGN1106F	<b>43</b>
		40	5,10	• RGN1104F	<b>38</b>
		20	2,80	• RGN1102F	<b>35</b>
2/3	325x352	200	18,30	• RGN2320F	<b>74</b>
		150	13,20	• RGN2315F	<b>69</b>
		100	8,80	• RGN2310F	<b>52</b>
		65	5,60	• RGN2306F	<b>36</b>
		40	3,10	• RGN2304F	<b>30</b>
		20	1,70	• RGN2302F	<b>27</b>
1/2	325x265	200	12,00	• RGN1220F	<b>76</b>
		150	9,10	• RGN1215F	<b>53</b>
		100	6,10	• RGN1210F	<b>39</b>
		65	4,10	• RGN1206F	<b>32</b>

## FONDO PERFORADO

Para separar o escurrir los alimentos del fondo de la cubeta.



Para cubeta	Código	PVP (€)
GN 2/1	• RFOND21A	<b>87</b>
GN 1/1	• RFOND11A	<b>43</b>
GN 2/3	• RFOND23A	<b>38</b>
GN 1/2	• RFOND12A	<b>29</b>
GN 1/3	• RFOND13A	<b>22</b>
GN 1/4	• RFOND14A	<b>18</b>

RECIPIENTES GASTRONORM

# Especiales

## PERFILES DIVISORIOS

Para dividir las cubetas Gastronorm y aprovechar su superficie.

Modelo	Medidas (mm)	Código	PVP (€)
2/1	530	• F1120602	<b>18</b>
1/1	325	• F1120601	<b>15</b>



## TAPAS GASTRONORM

· Rango de temperatura de trabajo: de -40°C a +110°C.

### TAPA

Modelo	Código	PVP (€)
1/1	• RTAPA110	<b>24</b>
2/3	• RTAPA230	<b>21</b>
1/2	• RTAPA120	<b>14</b>
1/3	• RTAPA130	<b>12</b>
1/4	• RTAPA140	<b>10</b>
1/6	• RTAPA160	<b>8</b>
1/9	• RTAPA190	<b>7</b>



### TAPA CON ORIFICIOS PARA ASAS

Modelo	Código	PVP (€)
1/1	• RTAPA11A	<b>31</b>
2/3	• RTAPA23A	<b>18</b>
1/2	• RTAPA12A	<b>16</b>
1/3	• RTAPA13A	<b>12</b>
1/4	• RTAPA14A	<b>10</b>
1/6	• RTAPA16A	<b>9</b>



### TAPA HERMÉTICA CON SILICONA

Modelo	Código	PVP (€)
1/1	• RTAPA11S	<b>80</b>
1/2	• RTAPA12S	<b>59</b>
1/3	• RTAPA13S	<b>49</b>
1/4	• RTAPA14S	<b>44</b>
1/6	• RTAPA16S	<b>44</b>



Detalle silicona

## PARRILLA GASTRONORM

· Fabricada en acero inoxidable

Modelo	Medidas (mm)	Código	PVP (€)
2/1	645 x 530	• RPARGN21	<b>39</b>
1/1	530 x 325	• RPARGN11	<b>21</b>
2/3	352 x 325	• RPARGN23	<b>21</b>

